

LMS TECHNOLOGIES, INC.
6423 Cecilia Circle
Bloomington, MN 55439
(952) 918-9060, Fax: (952) 918-9061

Test Report-ASHRAE Test Standard 52.1

Report #: **214**
Test Date: **01/09/16**

Test Requested By: Manufacturer

Model Number: MERV 8

Dimensions: 24x24x1 Inches

Number of pleats: 28 pleats

Filter Description: White synthetic pleat filter

Test Results

Test Air Flow Rate(CFM)/Velocity (FPM)	<u>1200 cfm/ 300 fpm</u>
Initial Resistance (in. WG)	<u>0.172</u>
Final Resistance (in. WG)	<u>1.0</u>
Initial Atmospheric Dust Spot Efficiency	<u>30</u>
Average Atmospheric Dust Spot Efficiency	<u>45.6</u>
Average Synthetic Dust Weight Arrestance	<u>89</u>
Ashrae Dust Holding Capacity	<u>64.1 grams</u>
Dust Feed Rate	<u>2 grams/ 1000cfm</u>

Test Conditions

Temp & Humidity: 70 @ 34%

Test Dust: ASHRAE 52.1 Dust

Test Technician: Mick Flom

Approved By: K. C. Kwok, Ph.D.

LMS TECHNOLOGIES, INC.

6423 Cecilia Circle

Bloomington, MN 55439

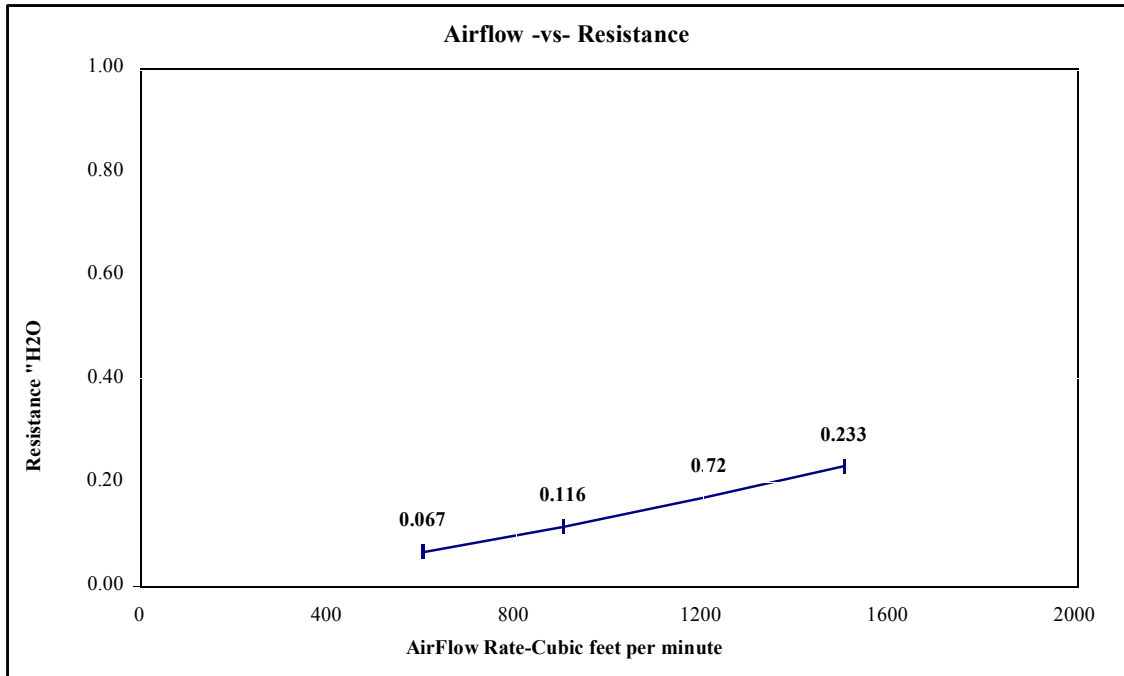
(952) 918-9060, Fax: (952) 918-9061

Report #: 214

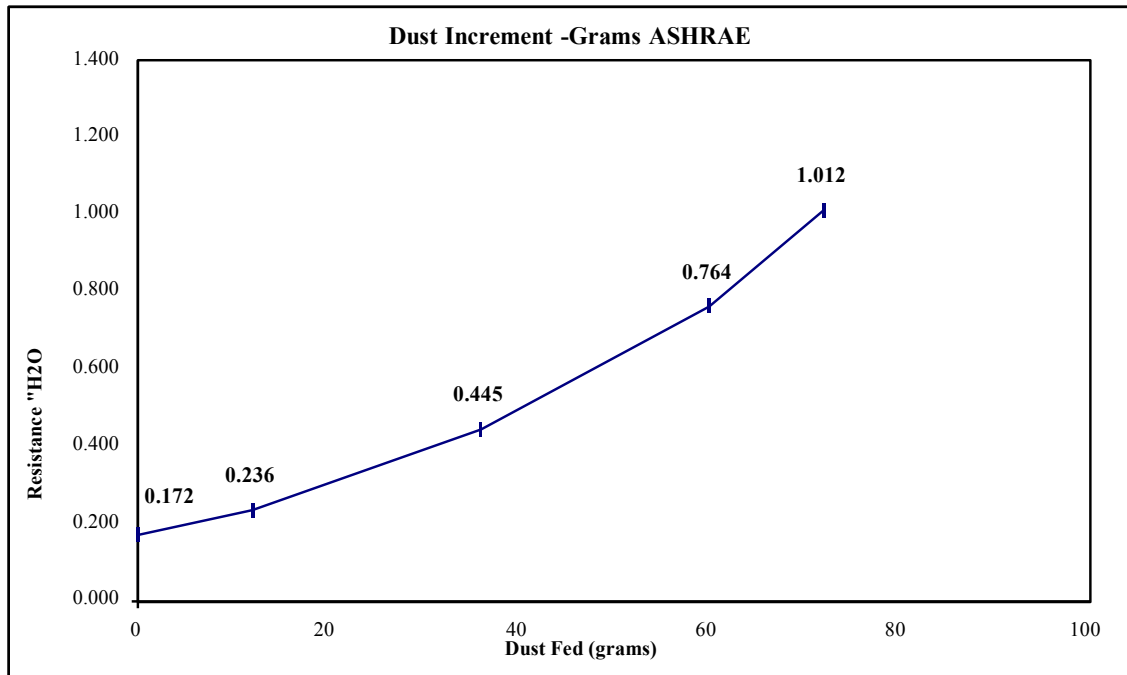
Test Report-ASHRAE Test Standard 52.1

Sheet #: 2

Clean Device



Dust fed -vs- Resistance



Test Tehnician: Mick Flom
Approved By: K.C. Kwok, Ph.D

LMS TECHNOLOGIES, INC.

6423 Cecilia Circle

Bloomington, MN 55439

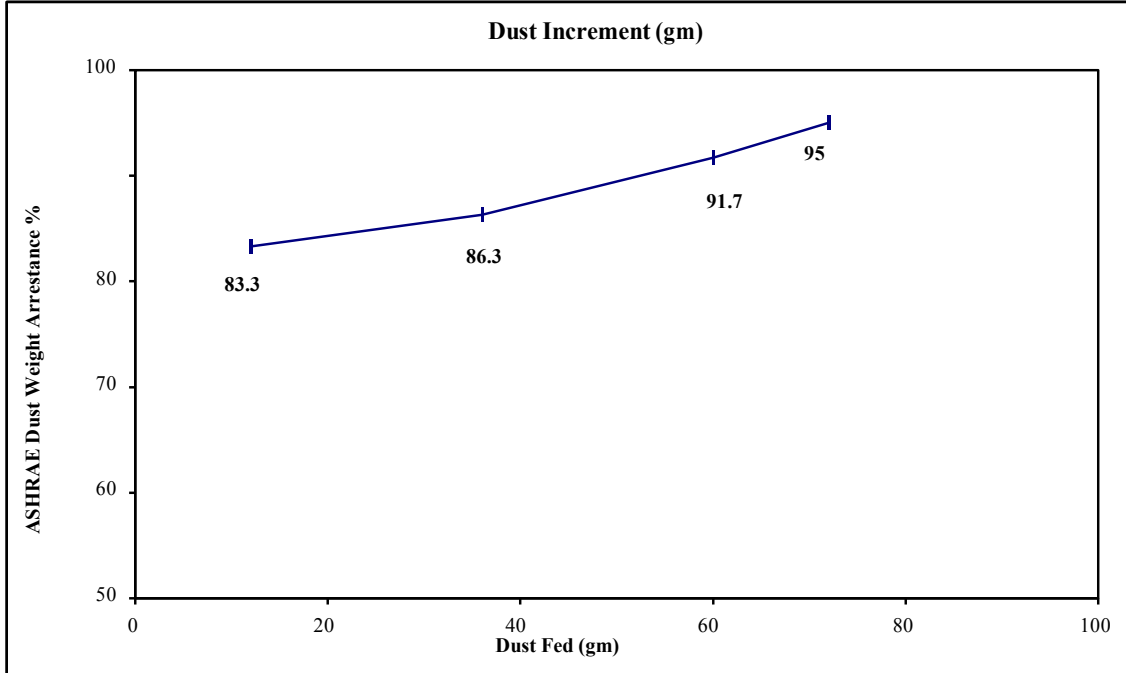
(952) 918-9060, Fax: (952) 918-9061

Report #: 214

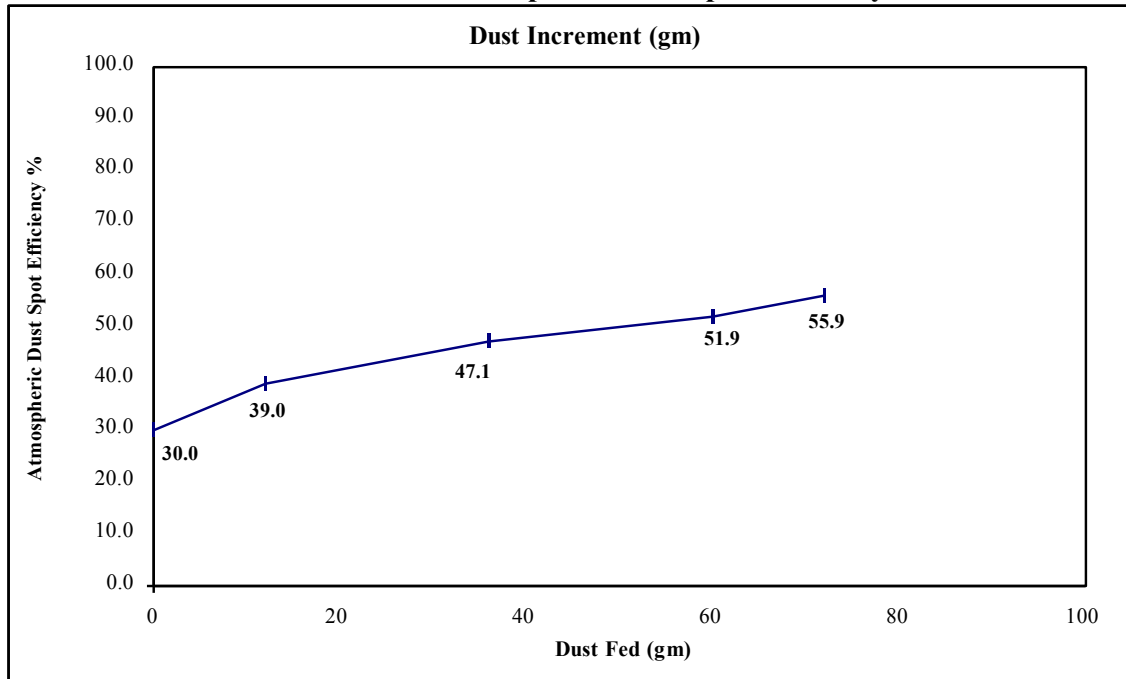
Test Report-ASHRAE Test Standard 52.1

Sheet #: 3

Dust fed -vs- Arrestance



Dust Fed -vs- Atmospheric Dust Spot Efficiency



Test Technician:

Mick Flom

Approved By:

K. C. Kwok, Ph.D